



DEFAULT TECHNICAL SERVICES **SYSTEM PACKAGES** VISION HALL

VISION HALL

TECHNICAL SERVICES SYSTEM PACKAGE

video	quantity
7.5m x 4.0m (2,880px x 1536px) Unilumen UPAD IV 2.6mm LED wall	1
Novastar Processing Package	1
Barco E2 Presentation Switcher for source switching	1
Apple Mac Mini (Keynote/PowerPoint) (Main & Backup)	2
43" Comfort monitor at front of stage	1
Wireless Presentation Clicker	1
The above will allow clients to display PowerPoint/Keynote from the computers provided or their own laptop onto the LED screen, the screen is flown at the back of the stage. There is a E2 presentation switcher provided which allow for synchronised switching of sources. A clicker for cueing slides is also included.	

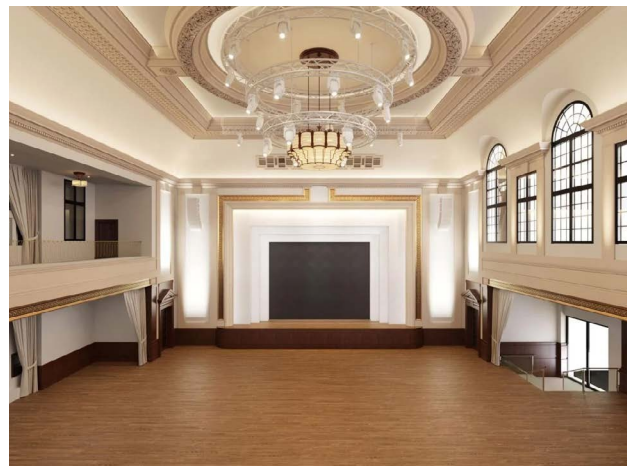
audio	quantity
Shure ADX1m Lapel Radio Microphone	1
Shure ADX2 Handheld Radio Microphone	1
PC Audio interface	2
Yamaha DM7-EX Audio Mixing Desk	1
Yamaha DME7 System Processor	1
d&b XSLi speaker arrays (L&R of stage)	2
d&b KSL-GSUB Sub-Bass loudspeaker	2
d&b Yi7 delay speakers (side & rear balcony's)	3
Sennheiser Mobile Connect assistive listening system	1
Comms with Headsets for Crew	3
The above allows for sound reinforcement covering the whole of the Vision Hall. Audio from the default laptop is routed into the Mixing desk. Two radio mics are provided for speech. One lapel and one handheld. There are 3 sets of headsets for crew communications.	

connectivity	quantity
Various Wall mounted patch panels	1

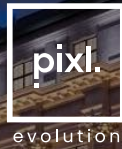
lighting	quantity
grandMA3 Light Lighting Desk	1
grandMA3 onPC (Backup for lighting desk)	1
ACME Geist BSWF Profile Moving Head Lights	9
ACME Neozone Wash Moving Head Lights	9
The above allows for the stage and presenter to be lit to support a standard event, further upgrade packages are available. There is also a full architectural lighting package (installed by the venue) that can light the room, this can be adjusted to suit an event.	

rigging	quantity
Circular Truss	1
Straight Trusses over the floor	4
Straight Trusses over the stage (1 for the LED wall)	3
Balcony bars on sides and rear of hall	3

technical support	quantity
Technicians to operate the equipment. They will be on an 8-hour call. Over time beyond 8-hours will be charged at additional cost.	2



Additional technical equipment for all the above spaces can be procured from the in-house provider *Pixl Evolution*.



VISION HALL UPGRADE PACKAGES

LIGHTING

TIER 1

base package + Tier 1 package

ACME Geist BSWF Profile Moving Head Lights	8
ACME Neozone Wash Moving Head Lights	8
Additional technician to operate the lighting equipment	1
They will be on an 8-hour call. Over time beyond 8-hours will be charged at additional cost.	

TIER 2

base package + Tier 1 package + Tier 2 package

ACME Geist BSWF Profile Moving Head Lights	8
ACME Neozone Wash Moving Head Lights	8
MDG ATMe Haze Generator	1

Additional technical equipment for all the above spaces can be procured from the in-house provider *Pixl Evolution*.



VISION HALL UPGRADE PACKAGES

Pixl Broadcast Gallery

Only applicable to the Vision Hall Event Space

Remote Camera Relay Package	quantity
Panasonic Robo cameras (Mounted in Vision Hall)	2
Atem 4/ME Constellation Vision Mixer	1
Black Magic Hyperdeck Studio Pxro 4k recorder	1
Feed to Vision Hall LED Wall	1
Additional technician to operate the camera equipment	2
They will be on an 8-hour call. Over time beyond 8-hours will be charged at additional cost.	

Broadcast Camera Relay Package	quantity
Panasonic 4K Studio Camera Channel	2
Atem 4/ME Constellation Vision Mixer	1
Black Magic Hyperdeck Studio Pro 4k recorder	1
Feed to Vision Hall LED Wall	1
Additional technician to operate the camera equipment	4
They will be on an 8-hour call. Over time beyond 8-hours will be charged at additional cost.	

Streaming Package	quantity
AJA Bridge Live RTMP/SRT Streaming Encoder	1
Additional technician to operate the streaming equipment	1
They will be on an 8-hour call. Over time beyond 8-hours will be charged at additional cost.	

Further Remote/Hybrid options available on request

Additional technical equipment for all the above spaces can be procured from the in-house provider *Pixl Evolution*.



PIXL BROADCAST GALLERY

Delivering broadcast-standard production for modern, hybrid events



Situated within the Inner Space, the Pixl Broadcast Gallery is a purpose-built space designed to support a wide range of live and hybrid events.

Whether you're staging a production in Vision Hall, holding a session in the Inner Space, or reaching a remote audience online, this facility brings together the tools and expertise needed to deliver an exceptional event.

Key Capabilities

Live Video Relay

Broadcast-quality camera feeds delivered directly to the main screen in Vision Hall, temporary screens in the Inner Space, or other areas throughout the venue.

Multi-Camera Recording

Capture your event from multiple angles in Vision Hall or Inner Space, creating a high-quality video asset for later use.

Live Streaming

Stream your event live to remote audiences via platforms like Zoom, Microsoft Teams, or your own dedicated stream (RTMP or SRT).

Remote Presenter Integration

Host a fully virtual broadcast, blending in-person or studio elements with remote speakers across any web platform or custom stream.

Camera Options

Remote-Controlled 'Robo' Cameras

Discreet and efficient, these are ideal for low-profile setups.

Full Broadcast Camera Channels

Choose from remotely operated PTZ (Robo) cameras discreetly mounted, or full broadcast camera channels, Tripod Mounted, Jib, Polecam, Steadicam etc.



A Tailored Approach

The Pixl Evolution team are on hand to offer guidance and support at every stage. We'll work closely with you to understand your requirements and deliver a bespoke production solution that meets the needs of your programme.

Additional technical equipment for all the above spaces can be procured from the in-house provider *Pixl Evolution*.